

LIVE THE LIFE...LOVE THE STYLE

COUNTRY HOMES & INTERIORS

SPRING DAYS!

GORGEOUS COTTAGE DECOR IDEAS,
A TULIP-FILLED GARDEN, FEELGOOD
LOOKS FOR A HAPPY, STYLISH HOME

Excited about
EASTER

RECIPES FOR A FRESH
& FESTIVE FEAST

EASY MAKES TO
DECORATE THE TABLE

THE BEST
CHOCOLATE EGGS

See the light!

**YOUR GUIDE TO
ROOF WINDOWS
& SKYLIGHTS**

**PLUS ULTIMATE
UTILITY ROOMS**

DREAMY
Country homes

❖ FRENCH-INSPIRED TOWNHOUSE ❖ IDYLIC COUNTRY COTTAGE
❖ CHARMING RENOVATION ❖ ELEGANTLY EXTENDED EDWARDIAN



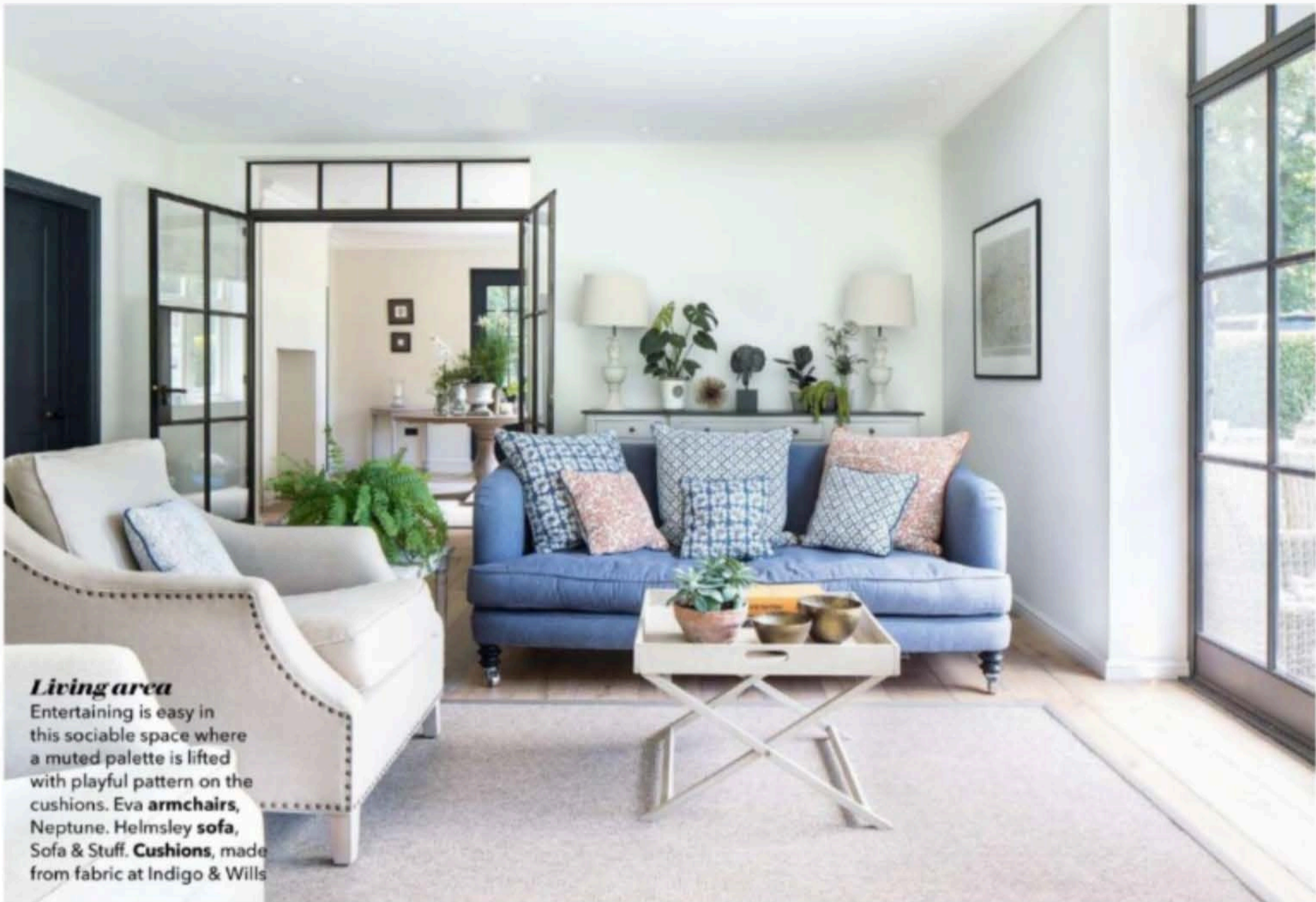
Kitchen

The extension allowed Lucy and James to wrap floor-to-ceiling steel doors around two sides, giving the family the most amazing light. Mottled Black external **doors** and the Bronze painted internal **doors**, both Cotswold Casements



NEW CHAPTER

Lucy and James Clippington started afresh and created a timeless and elegant English home in the beautiful Berkshire countryside



Living area

Entertaining is easy in this sociable space where a muted palette is lifted with playful pattern on the cushions. Eva armchairs, Neptune Helmsley sofa, Sofa & Stuff. Cushions, made from fabric at Indigo & Wills



AT HOME WITH

Owners Lucy Clippington, a legal advisor, and her husband James, a financial consultant, live here with their two daughters, Beth, 18, and Isabella, 15, and Coco the springer spaniel.

House A detached Edwardian house built in 1910 with six bedrooms, set within six acres of land, bought in 2018.

Lucy and James Clippington's recently renovated Edwardian home lies along a pretty tree-lined avenue, surrounded by the beautiful Berkshire countryside - a quintessentially English setting that stole the couple's hearts when they were looking for a new home in 2018.

'We were immediately struck by the sense of space when we viewed the property,' recalls Lucy. The impressive, red brick Edwardian house was set back from the road, within six acres of surrounding gardens and an adjoining paddock - a welcome addition for keen horse rider Lucy. 'The house felt secluded, but, with only a short walk to the nearby village with its small selection of shops, local pub and the parish church dating back to the Norman Conquest, we knew we wouldn't ever feel isolated.'

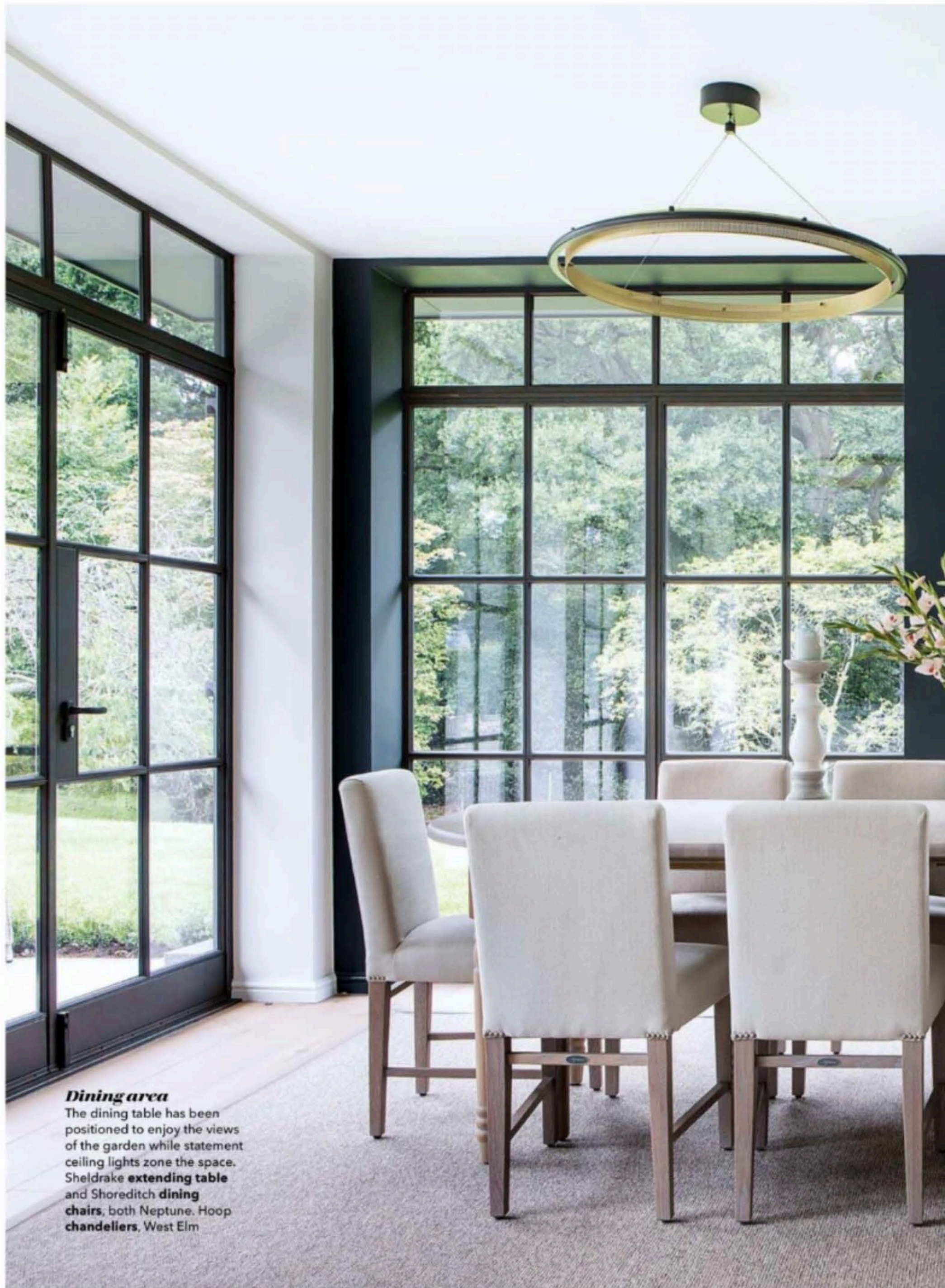
The family had spent the previous 15 years living in an 18th-century cottage a few miles down the road, which they had completely renovated. With elder daughter Beth about to leave for university and younger daughter Isabella starting college, it was time for a new chapter. 'We loved the area and with James still commuting into London, wanted to remain local, but we were keen to find somewhere with more space that offered a new challenge.'

Dating back to 1910, the property hadn't been touched in years and the original room configurations >

Kitchen

The generous island allows space for four bar stools and acts as a natural division between the cooking and relaxing areas. Kitchen **cabinetry**, the Henley Range, Neptune. For the Denali Cloud Lotto Quartz **worktop**, try Worktop Express. Tan leather bar **stools**, Cox & Cox





Dining area

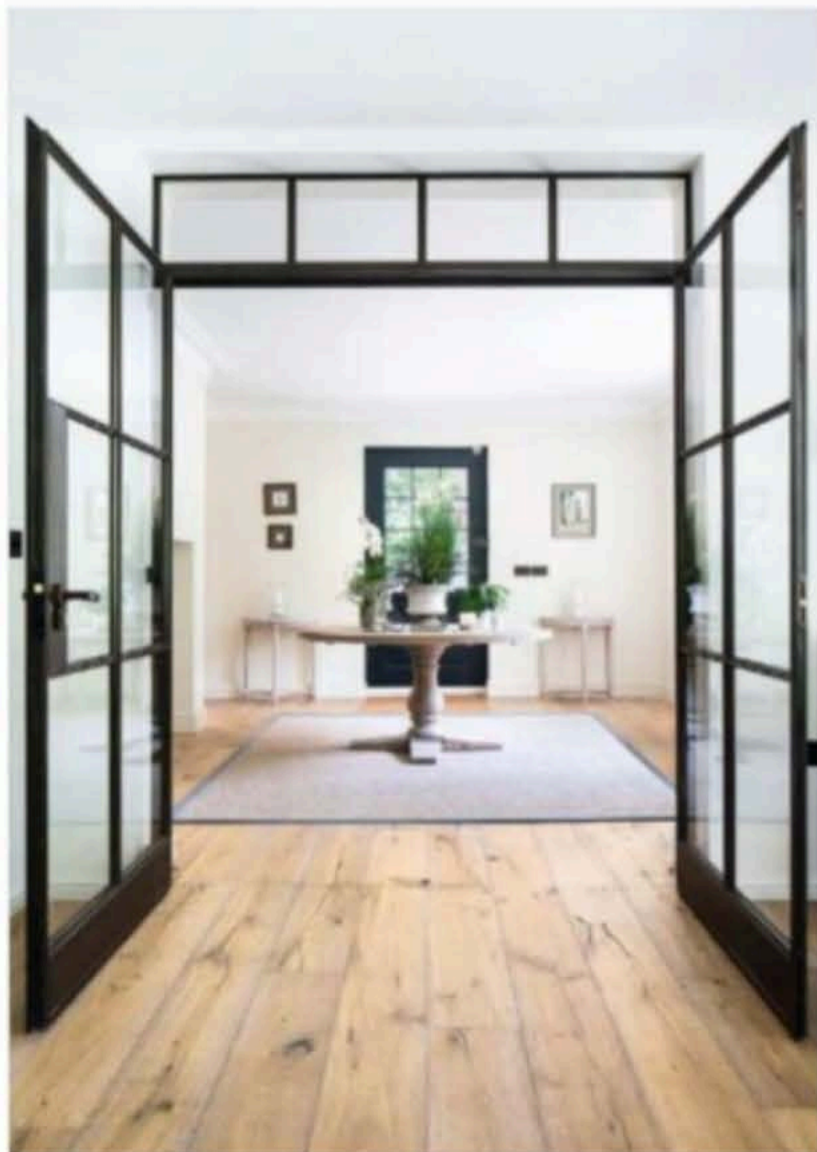
The dining table has been positioned to enjoy the views of the garden while statement ceiling lights zone the space. Sheldrake **extending table** and Shoreditch **dining chairs**, both Neptune. Hoop **chandeliers**, West Elm

“WE LOVE ENTERTAINING AND IT WAS IMPORTANT TO US TO CONNECT THE INSIDE AND OUTSIDE SPACES”



Garden

The generous floor-to-ceiling doors stylishly link the inside and outside areas, making the most of the views over the garden and swimming pool. Try John Lewis & Partners for similar rattan garden furniture.



were not suitable for modern day living, but the high ceilings and grand proportions were a far cry from the low beams and small rooms of the Clippingtons' existing cottage, and the potential was clear to see.

They enlisted the help of James Fowler from Fowler Architecture and Planning. 'James was brilliant at helping us look at ways in which the property could be developed, turning the space into sizes that worked for us,' says Lucy. The couple also engaged the help of interior designer Jo Calver from Isla James Interiors. 'With so many decisions to make all at once, it was reassuring to have Jo on board,' says Lucy. 'She worked alongside the architects on the plans, and also created lighting designs and beautiful bespoke joinery.'

With plans approved, the renovations began. Using the existing footprint, the couple began an ambitious two-part extension. 'It was such a large-scale project it all felt quite daunting, but as my late grandfather used to say, "without risk there is no reward".'

A generous, single-storey extension was added to the left side of the property to create a large open-plan kitchen, dining and living areas, with wraparound steel-framed doors, to make the most of the south-facing aspect. To the rear of the house, a double-height extension was added, providing an extra living room and more space upstairs to reconfigure the bedrooms into more suitable sizes. En suites were also worked >

Living room

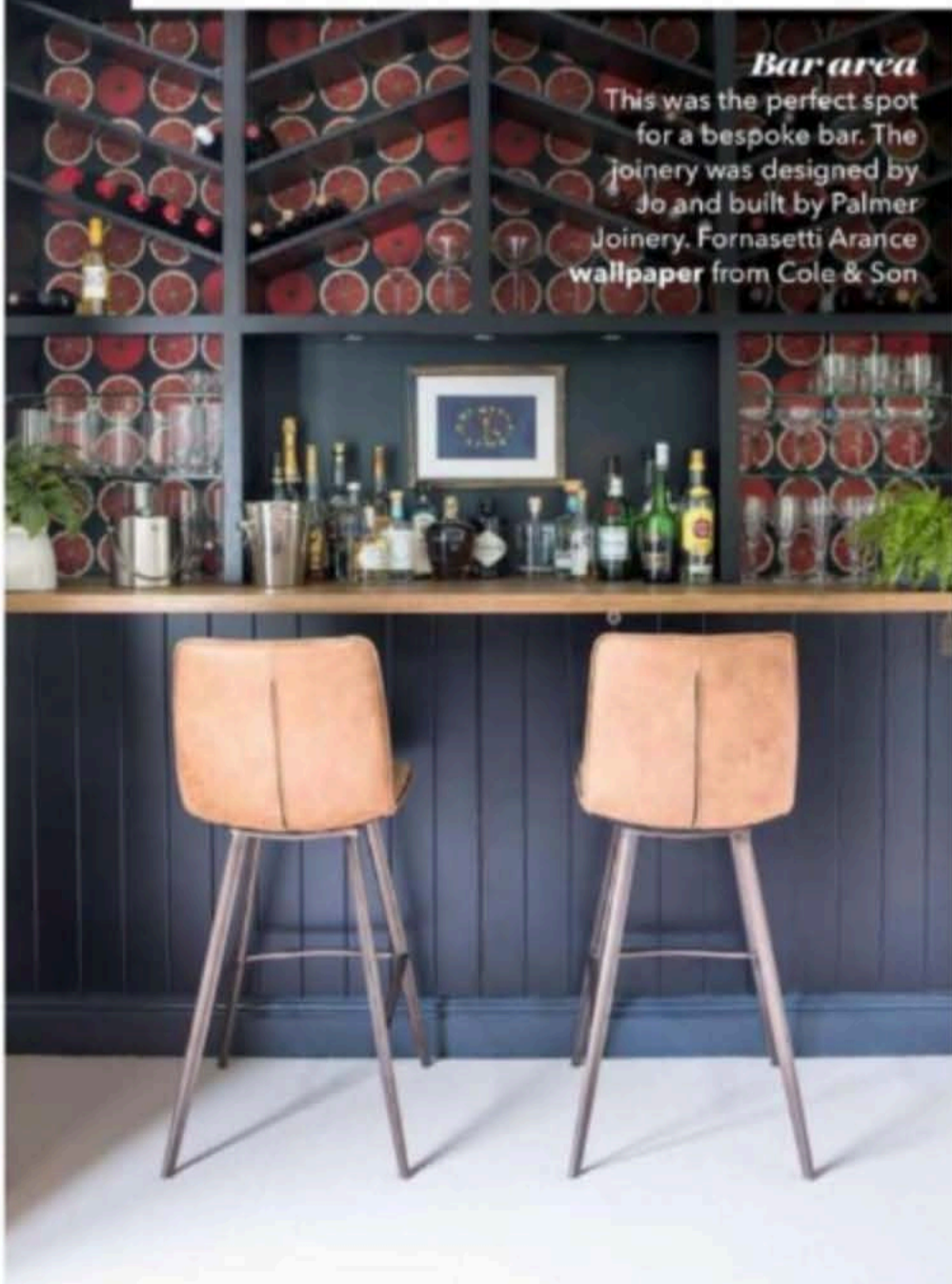
This room is a wonderful space to curl up and enjoy family games nights in front of the fire with drinks from the bar. The vintage leather club chairs were found on eBay



“THE NEW EXTENSION GIVES US AN OPEN-PLAN LIVING AREA, KITCHEN AND DINING AREA - AND EVEN A BAR”

Bar area

This was the perfect spot for a bespoke bar. The joinery was designed by Jo and built by Palmer Joinery. Fornasetti Arance wallpaper from Cole & Son



Living room

Jo designed the layout in the new extension to give it a smart, symmetrical feel, set around the oversized fireplace. Sundance mirror and large coffee table, both Andrew Martin



Main bedroom
The statement headboard was designed by Jo. **Headboard** upholstered in Carnival Fabric by Christopher Farr. **Cushions**, Andrew Martin



Main bathroom
Lucy chose classic marble tiles for the shower - the perfect anchor for the rest of the space. **Framed shower screen**, Drench. **Shower fittings**, Perrin & Rowe

ON OUR DOORSTEP

Visit... 'Highclere Castle (highclerecastle.co.uk), home of the Earl and Countess of Carnarvon, and the location for the TV series *Downton Abbey*. Book tickets on a public opening day to explore the main state rooms, Egyptian Exhibition and the gardens, and stop for afternoon tea at the Castle tearooms.'

Shop at... 'L Interiors (linteriors.co.uk) was opened by interior designer Lynda 16 years ago, in the pretty village of Bucklebury. The store sells an ever-changing range of beautiful gifts, handcrafted homewares and freshly cut local flowers. I'm a strong believer in supporting local businesses.'

Go for a meal at... 'The Woodspeen (thewoodspeen.com) is a beautiful Michelin-star restaurant, set in a restored 19th century farmhouse and grounds. It serves seasonal dishes and is the perfect spot for dinner.'

into the plans, along with a dressing room connected to Lucy's en suite and main bedroom.

In the grounds, plans were made to build a swimming pool and summerhouse. 'We love entertaining and it was important to us to connect the inside and outside spaces,' Lucy says. 'We spent ages mapping the path of the sun to ensure the pool was built in the sunniest spot.' The large south-facing doors now lead effortlessly onto the terrace and the swimming pool beyond and, from the thoughtfully placed dining table, the family enjoy beautiful views out over the trees and gardens. 'Living here feels as though we are always on holiday,' says Lucy.

When it came to the furnishings and décor choices Lucy looked again for advice from Jo Calver, which was invaluable. 'Lucy had clear ideas on how she wanted her home to look, modern and fresh with traditional elements to honour the building's heritage,' says Jo. Working together, the pair gave the house a new lease of life, with timeless pieces of furniture, carefully chosen fabrics tying in the different elements, and well thought-out décor that embraces the natural light flooding into every room.

The Clippingtons' home certainly makes a statement but they have also created a calm retreat from the rest of the world that feels connected to its surroundings. Lucy says, 'We are so delighted with the results and feel an exciting new chapter in our lives has just begun!'

BERKSHIRE COUNTRY HOUSE

Exterior

The house dates back to 1910 and the original layout needed updating for modern living



“WE WANTED OUR HOME TO LOOK MODERN AND FRESH, WITH TRADITIONAL ELEMENTS TO HONOUR ITS HERITAGE”

Snug

A squishy corner sofa beside the woodburning stove creates a cosy feel. Hambleton large **corner sofa**, Sofas & Stuff



Bedroom

A French-style bed gives the room an understated elegance. For a similar **bed**, try Feather & Black